

Surfside Colony Stormwater Protection District



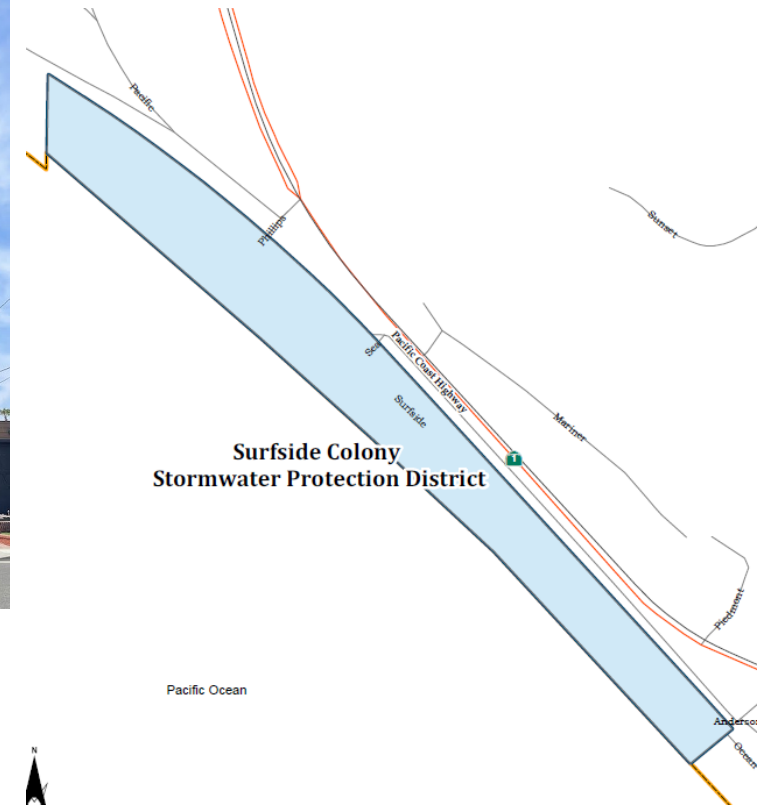
Surfside Colony SWP

- The Surfside Colony Storm Water Protection District was established on July 1, 1941 under the California Storm Water District Act of 1909.
- Primary scope of services provided by the District include:
 - protecting the lands in the district from damage by storm water, and the prevention and repair of storm related damage.



Surfside Colony

- The Surfside Colony is part of the City of Seal Beach, separated by the Seal Beach Naval Weapons Station.
- Sunset Beach, now part of the City of Huntington Beach, forms the southern boundary.



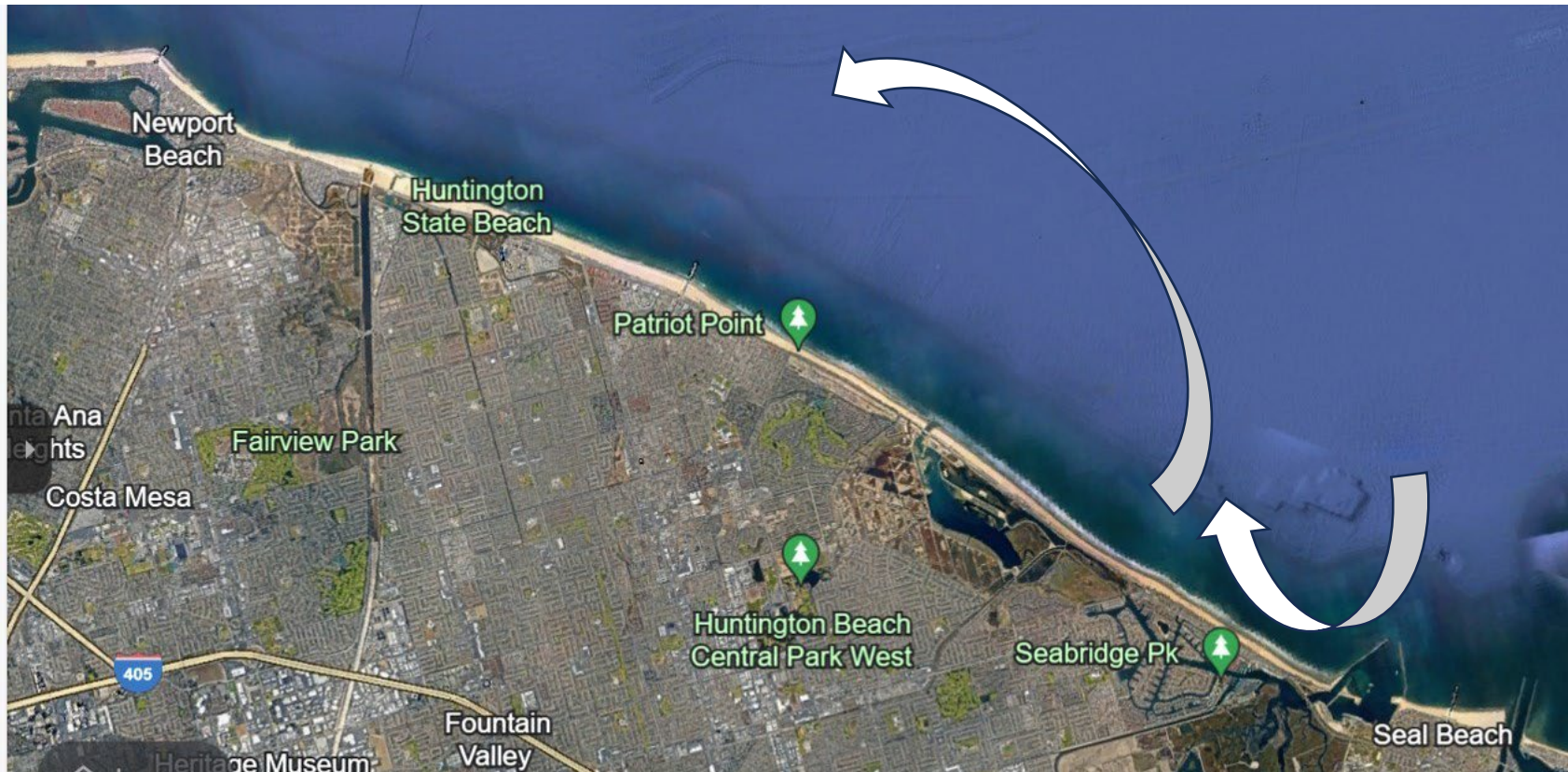
Beach Erosion

- During the 1940s, after the jetties creating and protecting Anaheim Bay were constructed, the beaches of Surfside and Sunset Beach began to recede dramatically.
- In 1962 the U.S. Congress published a study stating that the beach erosion was caused by US Army Corp of Engineers (USACE) construction projects including:
 1. Flood control and water conservation features along the Los Angeles, San Gabriel and Santa Ana Rivers.
 2. Extension of the Long Beach breakwater and the Los Alamitos Bay and San Gabriel River jetties.
 3. Jetties constructed at the entrance to Anaheim Harbor



Sand Migration

- Studies showed that sand migrated south from Seal Beach, depositing offshore, and a portion redepositing at Huntington & Newport Beach.
- As sand diminished from northern beaches, erosion increased at southern beaches.



Periodic Beach Nourishment

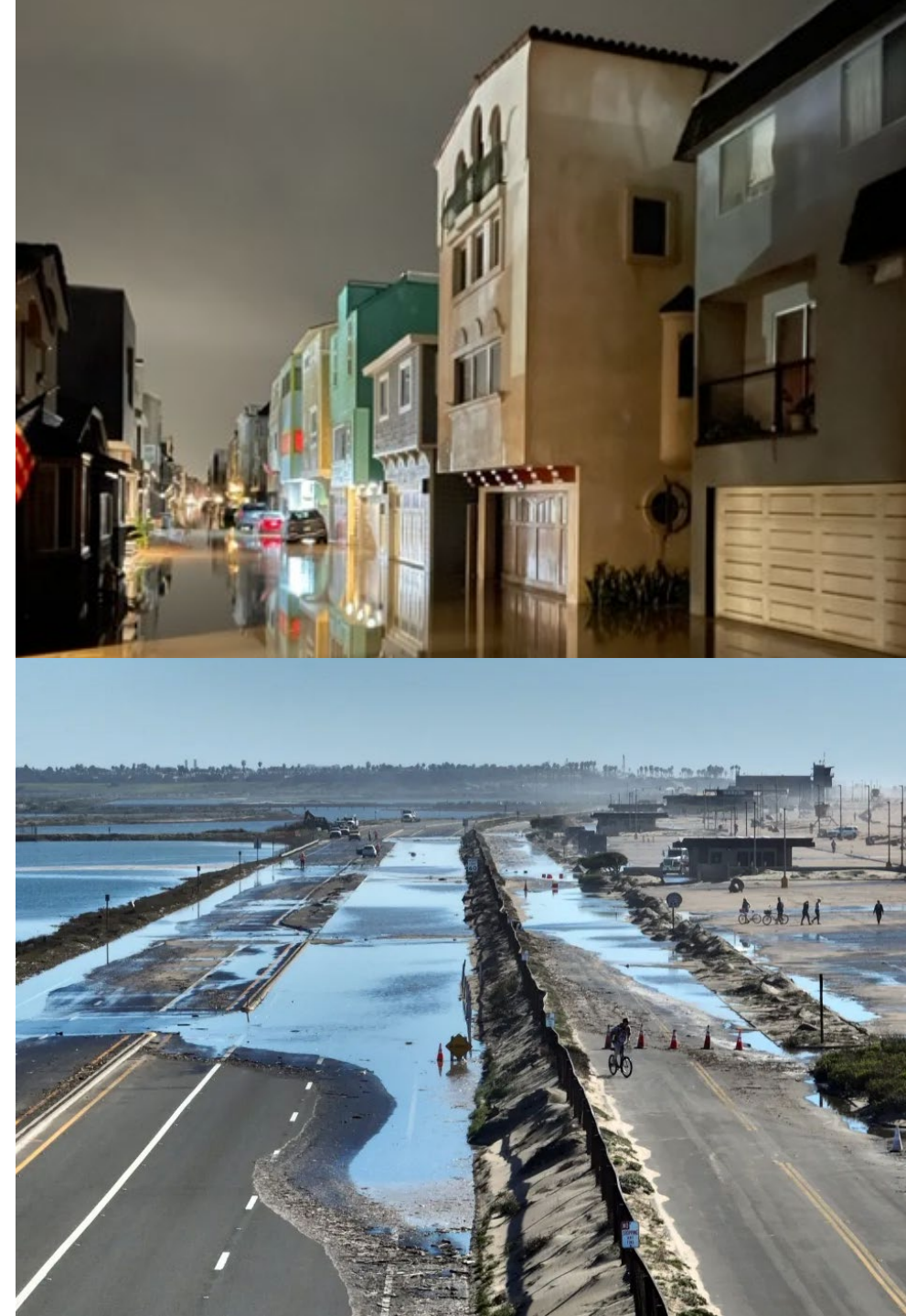


- In October 1962, Public Law 87-874 was enacted providing periodic beach nourishments of 1.75 mcy of sand, indefinitely, approximately five years apart.
- Funding for the nourishment was to come from proportional assessments to Federal, State, County, Coastal cities, and Surfside SWP District.
- Periodic nourishments roughly followed this pattern until Stage 12 in 2009, the last project conducted.

| | | | | |
|----|---------|-----------|-----------------|---------------------|
| 9 | 1990 | 1,300,000 | Offshore Borrow | Surfside Beach |
| | 1990 | 522,000 | Offshore Borrow | Surfside Beach |
| | 1992 | 1,227,000 | Santa Ana River | Newport (nearshore) |
| 10 | 1996-97 | 1,600,000 | Offshore Borrow | Surfside Beach |
| | 1996-97 | 102,000 | Offshore Borrow | Newport (nearshore) |
| 11 | 2001 | 1,750,000 | Offshore Borrow | Surfside Beach |
| 12 | 2009 | 1,750,000 | Offshore Borrow | Surfside Beach |

Battle for Stage 13

- In 2018, after all parties had submitted funds for Stage 13, it was announced that Federal funds (67% of project) were not budgeted in the fiscal year.
- Surfside SWP District engaged in a years long effort to obtain Federal funding. This was achieved in 2022.
- Surfside SWP District then solicited and gained support from City partners, as well as ISDOC, to petition the USACE to kick-off Stage 13 in 2023.
- Despite USACE reluctance to “pull in” from a planned late 2024 start, concern from the local participants was finally heard when storm flooding in January 2023 closed Bolsa Chica State beach, PCH, and damaged Surfside homes.





Stage 13 Underway

- Equipment staging commenced in November 2023.
- Sand is pumped from an offshore deposit by a floating dredge via a mile long pipe.
- Deposited sand is moved by multiple bulldozers.
- Project completion scheduled by the end of February 2024.



More Work to Do

- Stage 13 funding was obtained to provide 1.75 mcy of sand.
- USACE negotiated contract awarded for only 1.1 mcy.
- Surfside SWP District is commencing upon a campaign to award Stage 14 in 3-4 years, to address shortfall.